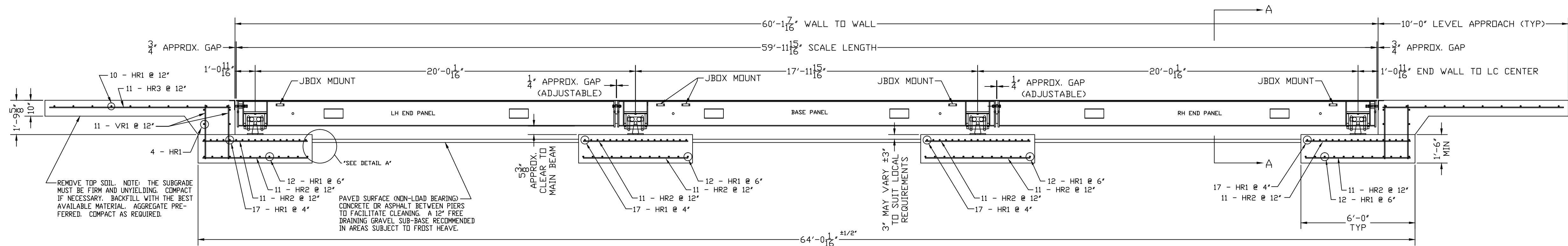


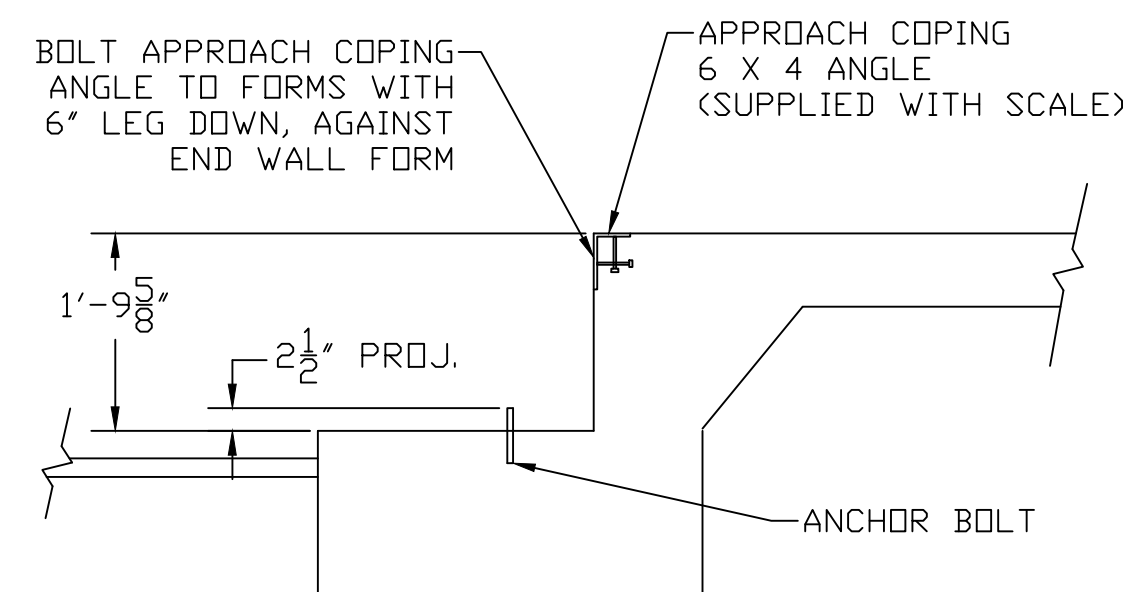
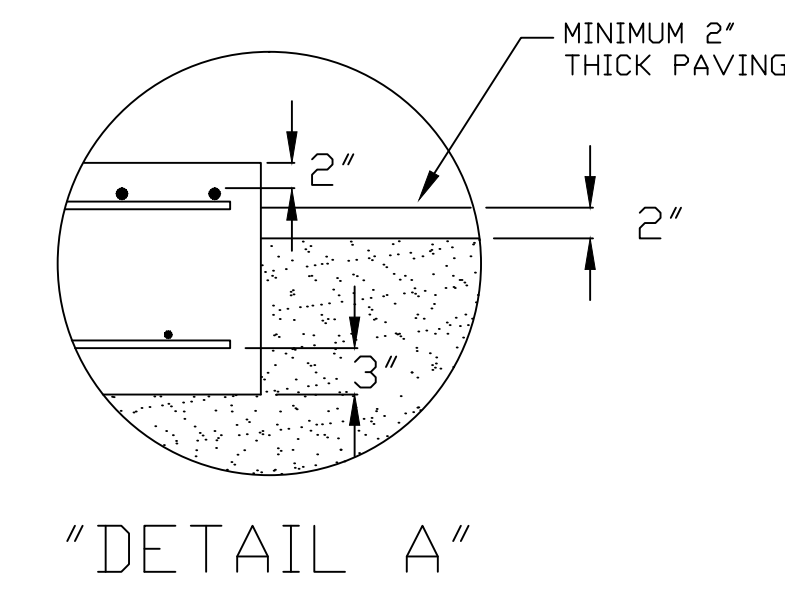
PLAN VIEW



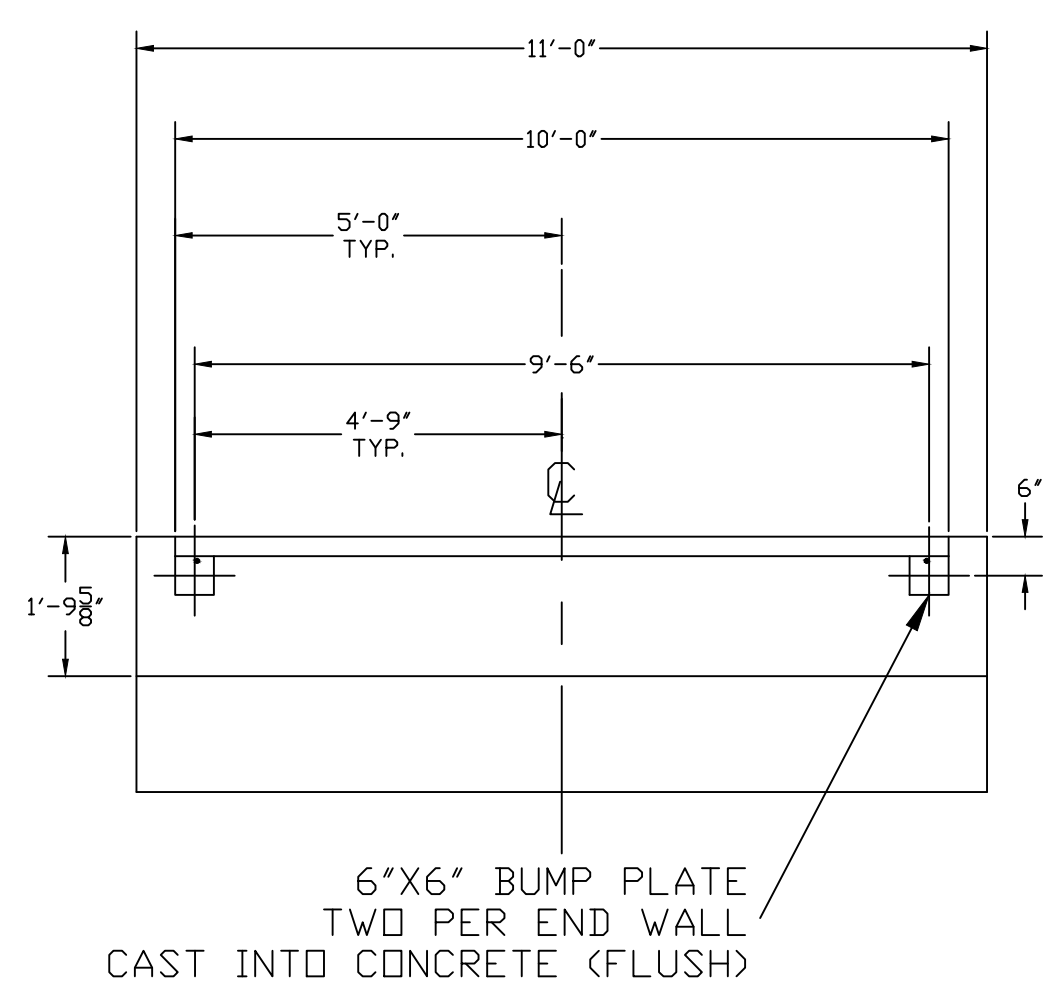
ELEVATION SECTION

NOTES:

- FOUNDATION SHOWN IS DESIGNED FOR SOILS WITH A MINIMUM BEARING CAPACITY OF 3000 PSF AND ADEQUATE DRAINAGE. IF SOIL CONDITIONS DO NOT MEET THESE REQUIREMENTS, ADJUST FOUNDATION OR SOIL CONDITIONS AS REQUIRED.
- IN AREAS OF THE COUNTRY WHERE THERE IS SEVERE FREEZING, INCREASE THE DEPTH OF THE FOUNDATION SO THAT THE BOTTOM EXTENDS BELOW THE FROST LINE, OR PROVIDE A MINIMUM OF 12" FREE DRAINING GRANULAR MATERIAL TO PREVENT FROST HEAVE.
- N.I.S.T. H-44 REQUIREMENTS AND LOCAL WEIGHTS AND MEASURES REGULATIONS MAY REQUIRE INSTALLATION PARAMETERS SOMEWHAT DIFFERENT THAN ILLUSTRATED ON THIS PLAN. IN ORDER TO INSURE COMPLIANCE, CONSULT THE LOCAL WEIGHTS & MEASURES OFFICE PRIOR TO CONSTRUCTION.
- REFER TO SCALE MANUAL FOR INSTALLATION AND OPERATION INSTRUCTIONS.
- A MINIMUM OF 24" OF CLEARANCE IS REQUIRED ON JUNCTION BOX SIDE OF THE SCALE NEAR THE BOX MOUNTS.



DRILL TYPE ANCHOR INFORMATION
(DRILL TYPE ANCHORS PROVIDED WITH THE SCALE)
FOR THE LC STANDS (16 REQUIRED)
5/8 DIA X 6" STUD TYPE ANCHORS
DRILL DIA 5/8", DRILL DEPTH 3 1/2"



SECTION A-A END WALL/BUMPS

FOUNDATION CONCRETE REQUIREMENTS
4000 P.S.I.

AREA	QUANTITIES
PIERS AS SHOWN	15 CU. YD.
APPROACHES	9 CU. YD.
FLOOR AT 2" THICK	2.5 CU. YD.
TOTAL	26.5 CU. YD.

FOUNDATION REINFORCING BAR SCHEDULE
ASTM A615 GRADE 60

MARK	NO.	REQ'D.	SIZE	LENGTH	WT.
HR1	144	#4	10'-6"	1010	
HR2	88	#4	5'-6"	323	
HR3	22	#4	9'-6"	140	
VR1	44	#4	2'-9"	81	
TOTAL WT:					1554

REINFORCING STEEL NOTES:

- REINFORCING STEEL SHALL BE FREE OF ALL MUD, DEBRIS, CEMENT GROUT, LOOSE RUST, GREASE, AND OIL.
- TACK WELDING OF BARS IS PROHIBITED.

THIS DRAWING IS SUPPLIED AS CHECKED BELOW:

- REFERENCE (ESTIMATES ONLY, NOT FOR CONSTRUCTION)
- CERTIFIED FOR CONSTRUCTION, THURMAN #
- CUSTOMER P.O.#
- CUSTOMER APPROVAL, RETURN ONE COPY.
- (ORDER ON HOLD UNTIL SIGNED COPY IS RETURNED)
- APPROVED AS DRAWN, APPROVED BY: DATE:
- APPROVED AS NOTED, APPROVED BY: DATE:

LET	BY	DATE	REVISION
1	JCR	9/21/11	MOVED BASE MODULE TO CENTER OF SCALE



8560 DIAMONDBACK XD
130K CLC 60' X 10'
FOUNDATION (4 SECTION, DB LC)

DATE	6/23/08
SCALE	N/A
DRAWN BY	NDC
CHECKED BY	
APPROVED BY	
DRAWING NUMBER	92435-FT
REVISION	1