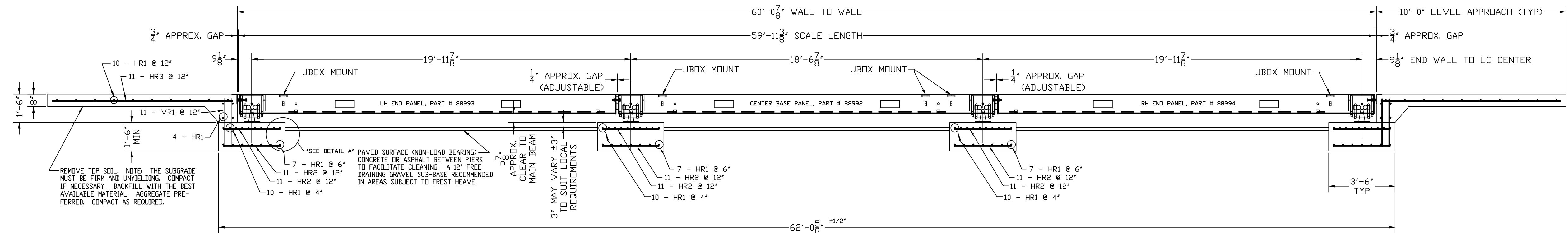


PLAN VIEW



ELEVATION SECTION

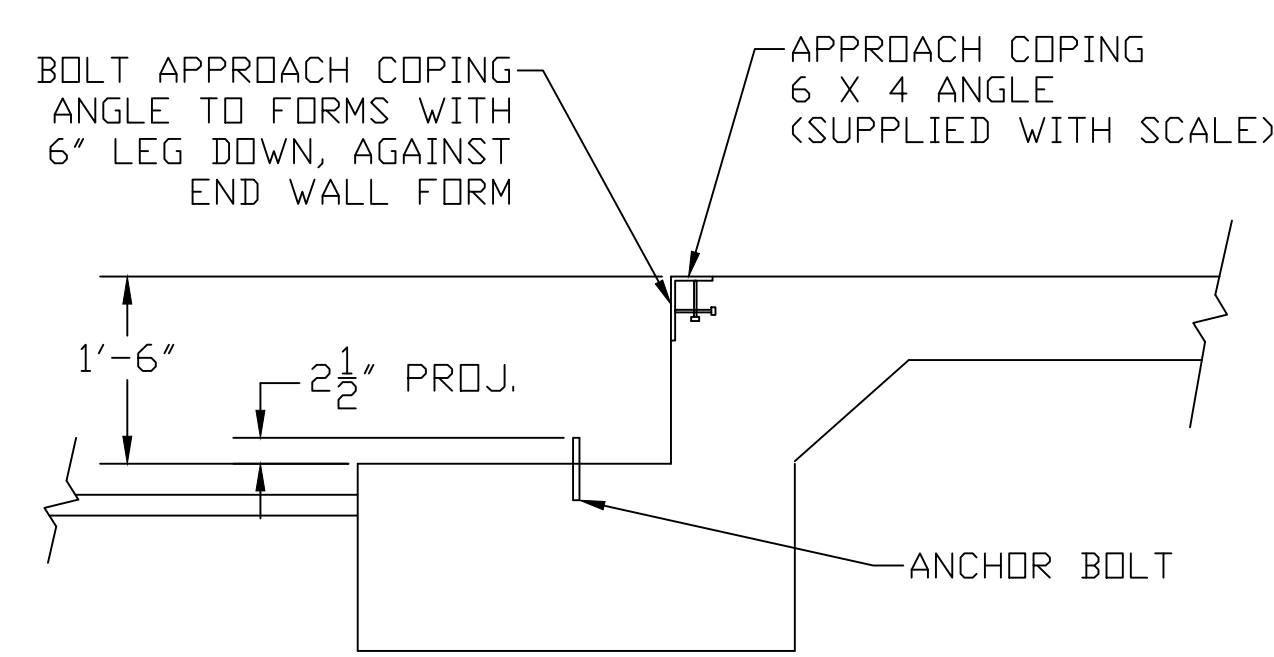
NOTES:

1. FOUNDATION SHOWN IS DESIGNED FOR SOILS WITH A MINIMUM BEARING CAPACITY OF 3000 PSF AND ADEQUATE DRAINAGE. IF SOIL CONDITIONS DO NOT MEET THESE REQUIREMENTS, ADJUST FOUNDATION OR SOIL CONDITIONS AS REQUIRED.
2. IN AREAS OF THE COUNTRY WHERE THERE IS SEVERE FREEZING, INCREASE THE DEPTH OF THE FOUNDATION SO THAT THE BOTTOM EXTENDS BELOW THE FROST LINE, OR PROVIDE A MINIMUM OF 12" FREE DRAINING GRANULAR MATERIAL TO PREVENT FROST HEAVE.
3. N.I.S.T. H-44 REQUIREMENTS AND LOCAL WEIGHTS AND MEASURES REGULATIONS MAY REQUIRE INSTALLATION PARAMETERS SOMEWHAT DIFFERENT THAN ILLUSTRATED ON THIS PLAN. IN ORDER TO INSURE COMPLIANCE, CONSULT THE LOCAL WEIGHTS & MEASURES OFFICE PRIOR TO CONSTRUCTION.
4. REFER TO SCALE MANUAL FOR INSTALLATION AND OPERATION INSTRUCTIONS.
5. A MINIMUM OF 24" OF CLEARANCE IS REQUIRED ON JUNCTION BOX SIDE OF THE SCALE NEAR THE BOX MOUNTS.

| FOUNDATION CONCRETE REQUIREMENTS | |
|----------------------------------|---------------------|
| 4000 P.S.I. | |
| AREA | QUANTITIES |
| PIERS AS SHOWN | 9 CU. YD. |
| APPROACHES | 7 CU. YD. |
| FLOOR AT 2" THICK | 3.5 CU. YD. |
| TOTAL | 19.5 CU. YD. |

| FOUNDATION REINFORCING BAR SCHEDULE | | | | |
|-------------------------------------|-----|--------|--------|-------------|
| ASTM A615 GRADE 60 | | | | |
| MARK | NO. | REQ'D. | SIZE | WT. |
| HR1 | 96 | #4 | 10'-6" | 674 |
| HR2 | 88 | #4 | 3'-0" | 177 |
| HR3 | 22 | #4 | 9'-6" | 140 |
| VR1 | 44 | #4 | 2'-6" | 74 |
| TOTAL WT: | | | | 1065 |

- REINFORCING STEEL NOTES:
1. REINFORCING STEEL SHALL BE FREE OF ALL MUD, DEBRIS, CEMENT GROUT, LOOSE RUST, GREASE, AND OIL.
 2. TACK WELDING OF BARS IS PROHIBITED.



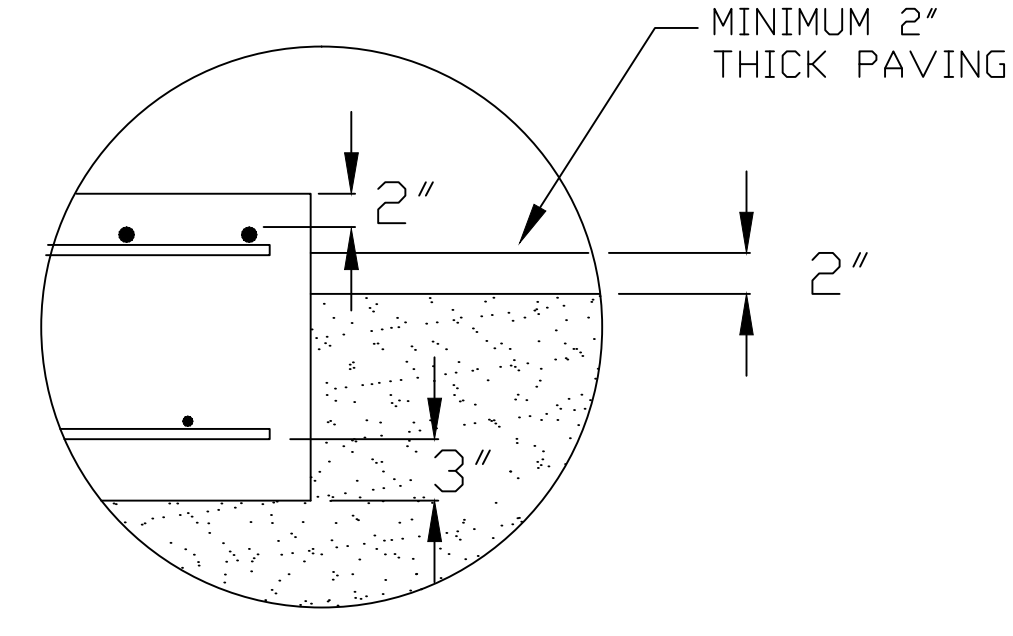
DRILL TYPE ANCHOR INFORMATION (DRILL TYPE ANCHORS PROVIDED WITH THE SCALE)

FOR THE LC STANDS (16 REQUIRED)

5/8 DIA X 6" STUD TYPE ANCHORS

DRILL DIA 5/8", DRILL DEPTH 3 1/2"

ANCHOR DETAIL



"DETAIL A"

THIS DRAWING IS SUPPLIED AS CHECKED BELOW:

REFERENCE (ESTIMATES ONLY, NOT FOR CONSTRUCTION)

CERTIFIED FOR CONSTRUCTION, THURMAN #

CUSTOMER: _____ DATE: _____

CUSTOMER P.O.# _____ DATE: _____

(ORDER ON HOLD UNTIL SIGNED COPY IS RETURNED)

APPROVED AS DRAWN, APPROVED BY: _____ DATE: _____

APPROVED AS NOTED, APPROVED BY: _____ DATE: _____

| LET | BY | DATE | REVISION |
|-----|-----|---------|---|
| 2 | JCR | 6/21/11 | UPDATED STRAY LINES IN SECTION 3 |
| 1 | LDC | 2/16/10 | GENERALIZED APPROACH COPING DESIGNATION |

THURMAN SCALE

8560 DIAMONDBACK 90K CLC

60' X 11' FOUNDATION

(4 SECTION, DB LC)

DATE: 6/18/07

SCALE: N/A

SHEET 1 OF 1

DRAWN BY: CMC

CHECKED BY: _____

APPROVED BY: _____

DRAWING NUMBER: 92382-FT

REVISION: 2

UNLESS OTHERWISE SPECIFIED: DIMENSIONS ARE IN INCHES. TOLERANCES: FRACTIONS ±1/16" ANGLES ±1.00° DECIMAL ±0.05" HOLE DIMETERS ±1/32"

MATERIAL: A36 FINISH: N/A