

NIST H-44 REQUIRES THAT ON THE APPROACH ENDS OF THIS VEHICLE SCALE, THERE SHALL BE A STRAIGHT APPROACH AT LEAST 40 FEET LONG, NOT LESS THAN 10 FEET OF ANY APPROACH ADJACENT TO THE PLATFORM SHALL BE LEVEL AND CONSTRUCTED OF CONCRETE OR SIMILAR DURABLE MATERIAL. ANY SLOPE IN THE REMAINING PORTION OF THE APPROACH SHALL INSURE EASE OF VEHICLE ACCESS, EASE FOR TESTING PURPOSES, AND DRAINAGE AWAY FROM THE SCALE.

ANCHOR BOLT LOCATIONS SEE NOTE 8. DO NOT PLACE REBAR IN CLOSE PROXIMITY OF ANCHOR BOLT LOCATIONS.

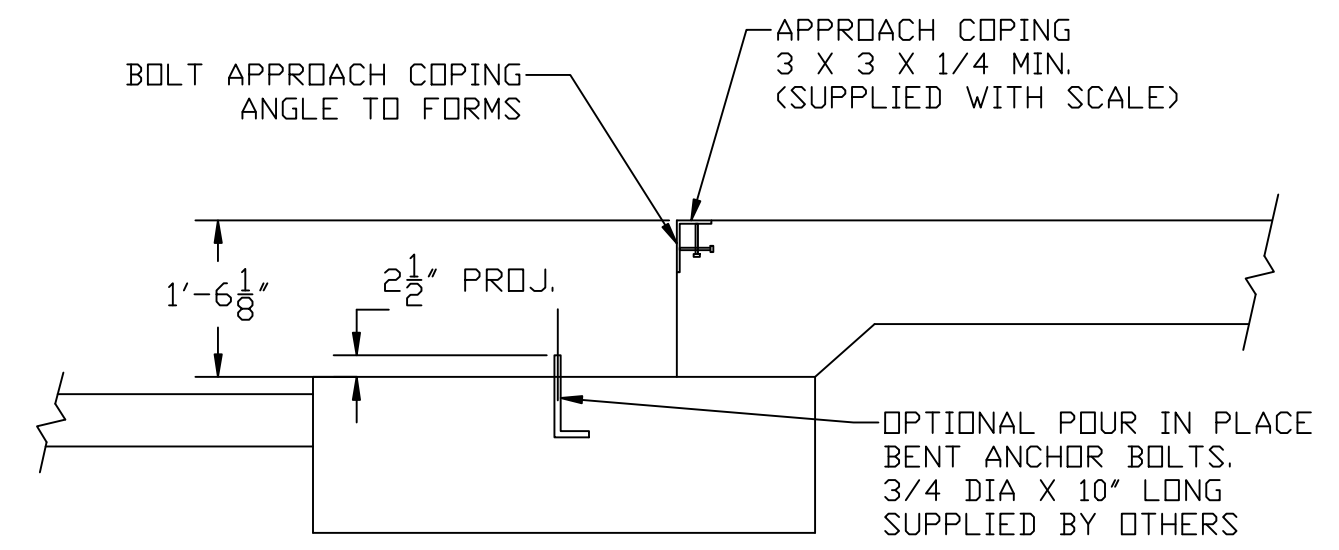
APPROX. EXCAVATION W/O OPTIONS	88 CU. YDS.
CONCRETE	
PIERS (*)	12 1/2 CU. YDS.
APPROACHES/WALLS	12 CU. YDS.
OPTIONAL SLAB	20 CU. YDS.

(*) PIERS CONCRETE QUANTITY IS CALCULATED FOR 18 INCH FOOTER DEPTH.

NOTES:

- FOUNDATION DESIGN IS BASED ON A MINIMUM SOIL BEARING CAPACITY OF 3000 LB/SQ. FT. FOR SOIL CONDITIONS WHICH DO NOT MEET THIS SPECIFICATION, CONSULT WITH THE THURMAN SCALE COMPANY.
- THE FOUNDATION SHALL BE INSTALLED AT AN ELEVATION AND LOCATION TO INSURE ADEQUATE DRAINAGE AWAY FROM SCALE. A PERIMETER TRENCH AND AGGREGATE BASE MAY BE ADDED IF DRAINAGE WILL NOT BE SUFFICIENT TO MAINTAIN 3000 LB/SQ. FT. BEARING CAPACITY.
- BOTTOM OF FOOTERS SHOULD EXTEND BELOW THE FROST LINE AND BE POURED MONOLITHICALLY WITH THE 10 FT. APPROACHES AND OPTIONAL SLABS OR FROST BARRIERS. AN 18 INCH FOOTER DEPTH IS MINIMUM.
- REINFORCING STEEL IS TO CONFORM TO ASTM A615 GRADE 60 SPECIFICATIONS.
- CONCRETE OF 4000 PSI MINIMUM COMPRESSIVE STRENGTH IS REQUIRED. CONSOLIDATE CONCRETE INTO POSITION BY VIBRATING.
- PIERS MUST BE LEVEL AND IN THE SAME PLANE WITHIN ±1/8 INCH.
- EXCAVATION, FORMS, REINFORCING STEEL AND CONCRETE FURNISHED BY OTHERS.
- ANCHOR BOLTS MAY EITHER BE POURED IN PLACE, OR DRILLED. SEE SECTION D-D.
- FOUNDATION REQUIREMENTS VARY FROM STATE TO STATE. CHECK WITH LOCAL WEIGHTS AND MEASURES DIVISION BEFORE CONSTRUCTION.
- WEIGHBRIDGE DECK IS FACTORY WELDED, READY TO USE. REFER TO SCALE INSTALLATION MANUAL PRIOR TO SETTING SCALE MODULES.

REBAR PLACEMENT SCHEDULE					
SYM.	QTY.	SIZE	LENGTH	TOTAL WT.	REMARKS
S1	60	#4	9'-6"	381 LBS.	(30) EACH APPROACH TOP & BTM
S2	40	#4	14'-9"	394 LBS.	(20) EACH APPROACH TOP & BTM
S3	60	#4	2'-6"	100 LBS.	(30) EACH END WALL VERT
S4	24	#6	14'-9"	532 LBS.	(6) EACH MAIN PIER
S5	30	#4	2'-0"	40 LBS.	(15) EACH CENTER PIER
S6	2	#4	10'-0"	15 LBS.	LONG FULCRUM PIER
S7	18	#4	2'-0"	27 LBS.	FULCRUM PIERS
S8	30	#4	2'-9"	55 LBS.	(15) EACH END PIER
S9	4	#4	2'-0"	6 LBS.	FULCRUM PIER
S10	2	#4	2'-0"	3 LBS.	LC PIER
S11	3	#4	1'-0"	2 LBS.	LC PIER
S12	12	#4	14'-9"	118 LBS.	(6) EACH END WALL/PIER/APPR.
TOTAL REBAR WEIGHT					1,673 LBS.



DRILL TYPE ANCHOR INFORMATION
(DRILL TYPE ANCHORS PROVIDED WITH THE SCALE)
5/8 DIA X 6" STUD TYPE ANCHORS
DRILL DIA 5/8", DRILL DEPTH 3 1/2"

THIS DRAWING IS SUPPLIED AS CHECKED BELOW:

REFERENCE (ESTIMATES ONLY, NOT FOR CONSTRUCTION)

CERTIFIED FOR CONSTRUCTION, THURMAN#

CUSTOMER: _____ DATE: _____

CUSTOMER APPROVAL, RETURN ONE COPY.

(ORDER ON HOLD UNTIL SIGNED COPY IS RETURNED)

APPROVED AS DRAWN, APPROVED BY: _____ DATE: _____

APPROVED AS NOTED, APPROVED BY: _____ DATE: _____

TOLERANCES (UNLESS OTHERWISE SPECIFIED) ± 1/8"

DIMENSIONS ARE IN INCHES UNLESS OTHERWISE SPECIFIED

THURMAN SCALE
255 E. LIVINGSTON AVE.
COLUMBUS, OHIO 43215
PH: (614) 221-9077
FAX: (614) 221-8879

This drawing is the property of Thurman Scale Company and is loaned to the recipient for his/her confidential use only. In consideration of the loan of this drawing, the recipient promises and agrees that it shall not be used in any way detrimental to the interest of Thurman Scale Company, that it shall be returned upon request, and that it shall not be reproduced, copied, loaned or otherwise disposed of, directly or indirectly without the express written consent of Thurman Scale Company.

8140 55K CLC 80' X 10' FOUNDATION
W/PIERS (4 SECT, 6" PIPE, M=213.75)

DATE: 04-29-05
DRAWN BY: HAWKINS
DRAWING NUMBER: 92038-FT
REV: 0