

Ethernet-Serial Server

GW212 / GW215

Quick Start Guide



Version 1.4

Updated on 2009/05/15

Toll Free: 1-888-908-3330
Tel: 1-732-568-1988
Email: support@neteon.net

www.neteon.net

Thank you for purchasing GW21x Ethernet-Serial Server product. This document intends to provide customers with brief descriptions about the product and to assist customers to get started. For detail information and operations of the product, please refer to the product user's manual in the product CD.

1. Packaging

Please check your package contains the following items:

- ⊙ GW21x Serial Device Server
- ⊙ Quick Install Guide
- ⊙ For GW212 (RS232) Model Only: DC Power Adapter
- ⊙ Product CD
- ⊙ Wall mounting screws
- ⊙ Optional Items :
 1. Model No: AC24VT (110V AC to 24V DC Power Adapter for use with Terminal Block)
 2. Model No: Din-Rail-Kit (for use with GW21x DIN Rail Mounting)

2. Hardware Setup

NOTE:

1. **GW212** (for RS-232), **GW215** (for RS422/485)
 2. You can press the reset button of GW21X to reset the settings to the default value
- Figure 2.1 shows the names of GW212 components. In the figure, the indicated switch settings represent factory settings.



Figure 2.1. GW21X DIN-Rail Mounting

LED Indicators:

LAN LED

Message	Description
Off	Ethernet Disconnected
Blinking with Green	Data is transmitting on Ethernet for 100Mbps
Blinking with Orange	Data is transmitting on Ethernet for 10Mbps

Table 1. LAN LED Message

COM Port LED

Message	Description
Off	No data is transmitting on COM port
Blinking	Data is transmitting on COM port

Table 2. COM Port LED Message

RUN LED

Message	Description
On	Jumper JP1 Pin1 and Pin2 are shorted to disable AP firmware running
Blinking (rate: 0.5 Sec)	AP firmware is running normally

Table 3. RUN LED Message

Installation Procedures:

Step 1: Connect GW21x to power source using 5V DC Jack (DC Adapter included) or 24V DC Terminal Block (Require optional item model AC24VT)

Step 2: Connect GW21x to your Ethernet network. Use a standard straight-through Ethernet cable when you connect it to a hub/switch, you also can connect it to your PC's Ethernet port via a cross-over Ethernet cable for easy set up. However, in this case you need to make sure your PC is in the same network sub-net as GW21x.

Step 3: Connect GW21x's serial port to a serial device.

Step 4: Placement options. You can mount GW21x to a wall/panel (Mounting screws included) or Din-Rail rack (Require optional item model: Din-Rail-Kit).

3. Software Setup

Default Network Setting:

IP: 10.0.50.100

Gateway: 10.0.0.254

Subnet: 255.255.0.0

Auto IP (Dynamic IP):

Default User Name/Password:

User Name: admin

Password: null (leave it blank)

A DHCP server can automatically assigns the IP address and network settings. GW21x supports the DHCP function. By default, the DHCP function on GW21x is disabled; you can use Monitor.exe to enable this function. (ref Figure 3.1)

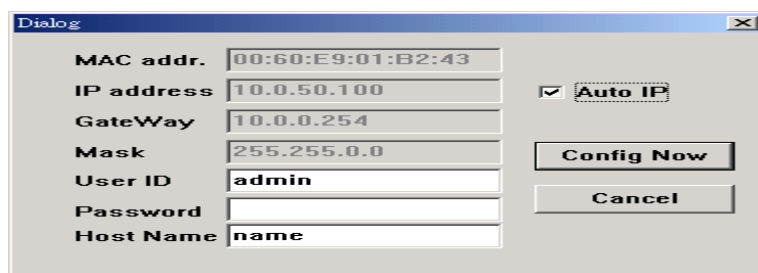


Figure 3.1. monitor.exe utility Dialog Window

Assign a Static IP address by:

A. Using Telnet

1. Telnet to GW21x using DOS command "Telnet IP_address". Example: telnet 10.0.50.100
2. GW21x's network, link mode and COM ports settings can be configured in the telnet window

B. Using Monitor.exe Utility

Use **Monitor.exe** which comes inside the Product CD to automatically search for all GW21x connected to your local area network. Then please select the desired GW21x to configure the network setting

individually.

C. Using Web Browser

1. Make sure your PC is located on the same network sub-net as GW21x
2. Open a web browser, then type in the IP address of GW21x to be configured. Default user name is **admin** and default password is **null (leave it blank)**.
3. GW21x's network, link mode and COM ports settings can be configured in different web pages.
4. Click "**Save Configuration**" to save settings.
5. Click "**Restart**" button to make the change effective if necessary.

4. Pin Assignments

The pin assignments of DB9 connector on GW212 is shown in the following table:

Pin#	RS-232 Full Duplex for GW212 Model
1	DCD
2	RX
3	TX
4	DTR
5	GND (Signal Ground)
6	DSR
7	RTS
8	CTS
9	N/A

The pin assignments of Terminal Block connector on GW215 is shown in the following table:

Pin#	RS-485/RS-422 4 wire, Half Duplex For GW215	RS-485 2 wire, Full Duplex For GW215
1	T+	NC
2	T-	NC
3	R+	Data+
4	R-	Data-
5	SG (Signal Ground)	SG (Signal Ground)

5. Customer Service and Support

Telephone: Toll Free 1-888-908-3330, Outside USA: +1-732-568-1988

Email: support@neteon.net

Web: www.neteon.net